



Stainless Steel Process Tank



- Capacity:** 800 Gallons/3028 Liters with 20% Head Space
- Power:** SEW-Eurodrive 1.5 HP Gearmotor, Single or Three Phase
- Agitation:** Standard Blade Bottom Agitation
- Heating:** Min. 1,200,000 BTU Hot Water or Steam Boiler Sold Separately
- Jacket:** Dimple Plate, Bottom & Side Zone, Max. 70 PSI, Max. 50 GPM
- Ports:** (2) 1.5" TC Ports or (2) Thermowells for the Product and Indicating Thermometer, (2) 1.5" TC CIP Sprayballs Ports, (1) TC Inlet Port, and (2) Lifting Lugs
- Lid:** Flat Top with Center Bridge or Manway Cover
- Bottom:** Slight Pitch Toward Outlet
- Insulation:** Polyurethane
- Walls:** 304 Stainless Steel, No. 4 Finish (316 SS Available)
- Legs:** (4) Stainless Legs with Adjustable Ball Feet
- Outlet:** 2" Leak Detect Valve Ready
- Dimensions:** TBD



PROCESS TANK LIST PRICE

\$ 32,000.00

Add-On Features :

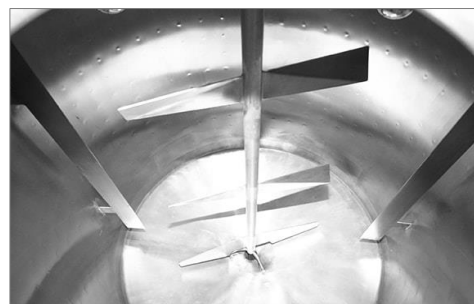
316 Stainless Steel Interior-Extra Corrosion Protection for Product Contact Surface Area	\$ 3,800.00
Cone or Dish Bottom Tank Design - no additional charge	\$ -
Side and Bottom Scrape Agitation	\$ 2,700.00
Full Sweep Agitation	\$ 2,500.00



Full Sweep Agitation



Full Scrape Agitation



Bottom, Middle & Top Blade Agitation