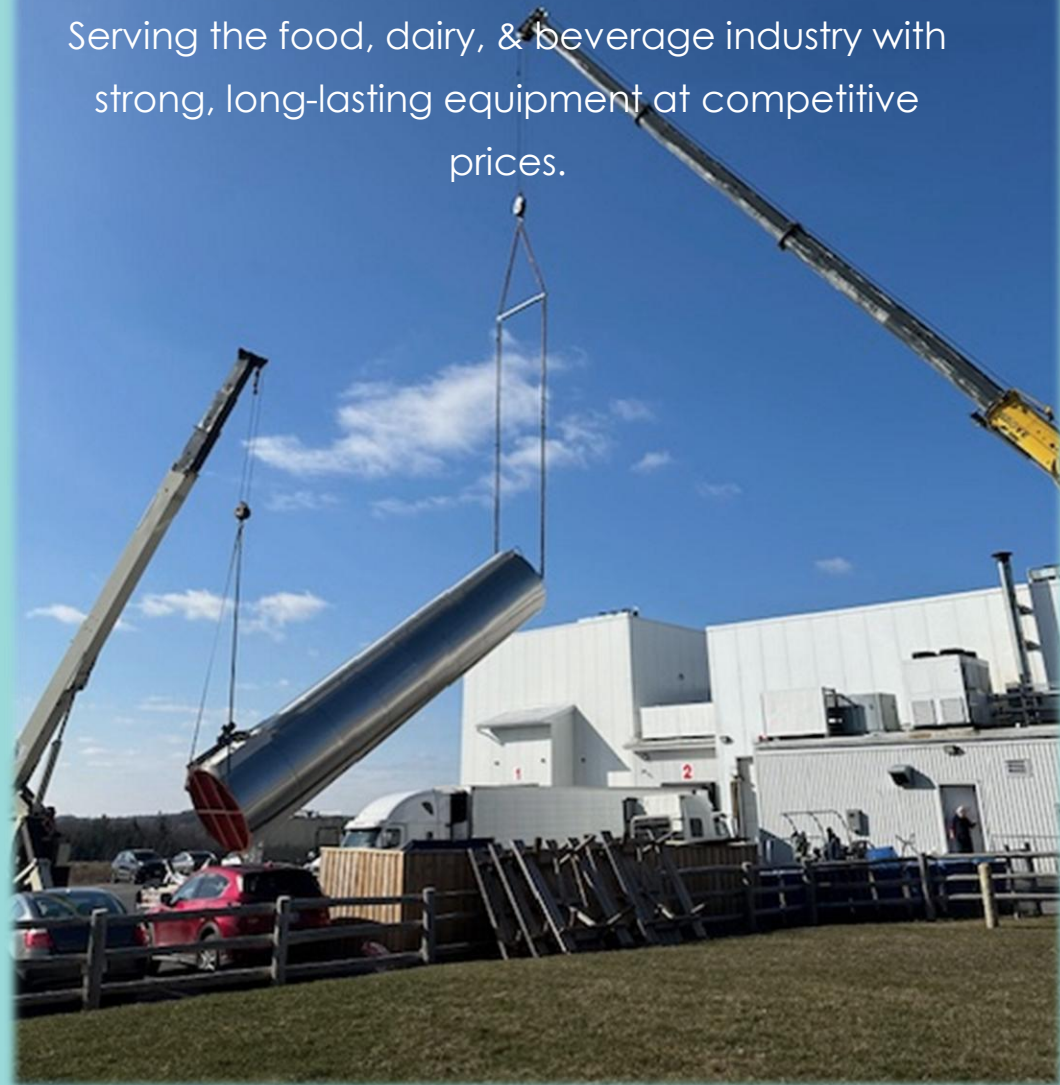




## Stainless Steel Storage Silos

Serving the food, dairy, & beverage industry with strong, long-lasting equipment at competitive prices.



# Silo Storage Tanks

Silos are constructed with 304 Stainless Steel, 11 Gauge interior wall with #4 finish and 14 Gauge exterior wall with 2B finish. A 304 Stainless Steel dimple plate heat transfer surface is located on the lower sidewall and tank bottom with insulation. Bottom sweep agitation with propeller agitator blade at 50% elevation of tank. Optional Alcove available for indoor/outdoor installations.

## Standard Sizes

1,000 Gallon

2,000 Gallon

3,000 Gallon

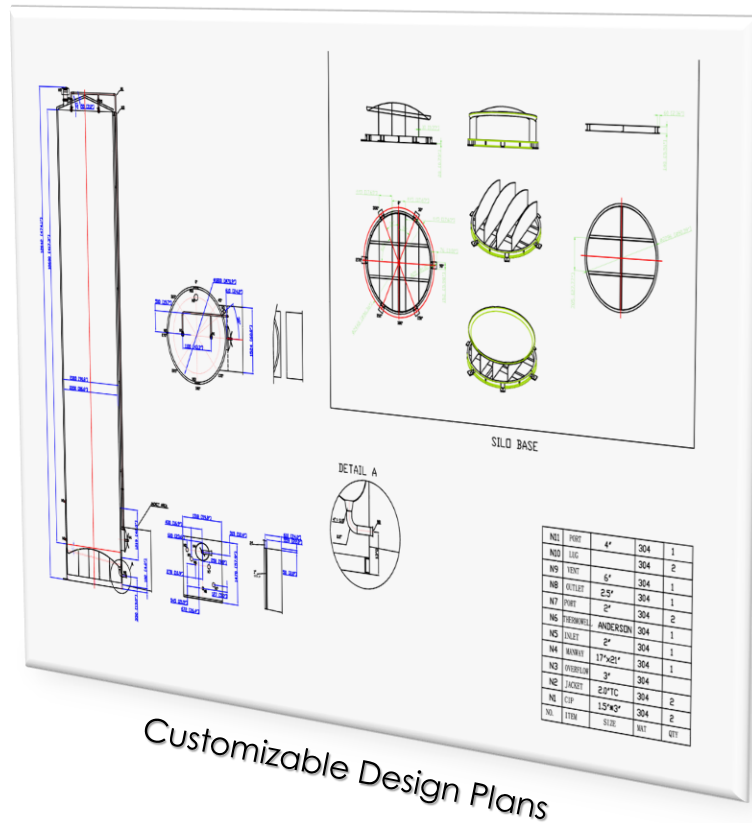
4,000 Gallon

5,000 Gallon

6,000 Gallon

8,000 Gallon

10,000 Gallon



Customizable Design Plans

# Silo Construction & Design Features:

**Material:** All product contact to be type 304 stainless steel.

**Insulation:** 2" polyurethane rigid insulation on sides and bottom, glass-wool on top.

**Outer Jacket:** 14 Gauge stainless steel, 2B finish with welds buffed.

**Outer Top:** 14 Gauge stainless steel, 2B finish with welds buffed, 15 degree conical.

**Outer Bottom:** 3/8" carbon steel plate with inner bottom head stud welded and with shell banded circumferentially to base support, anti-rust prime painted.

**Outlet:** One(1) 3" T304 stainless steel tri-clamp ferrule.

**Inlet:** One(1) 3" T304 stainless steel tri-clamp ferrule.

**Alcove:** 14 Gauge T304 stainless steel, 60" x 60" x 24", 2 -Degree slope for drain on bottom

**Manway:** T304 Stainless steel, side entering, oval 17" x 20", inside closing, with stainless steel grab bar located above manway.

**CIP Device:** Top mounted, two (2) T304 stainless steel 2½" spray balls manifold assembly, removable from top exterior.

**CIP Line:** T304 stainless steel 2" CIP line, from top connection to connection in alcove.

**Vent Line:** T304 stainless steel 3" vent line, from top connection to connection in alcove.

**Heat Transfer Surface:** T304 stainless steel dimple plate heat transfer surface located on tank lower sidewall and tank bottom in one zone.

Includes one (1) 2" FNPT inlet and one (1) 2" FNPT outlet connections. Design for chilled water. 70 psig @ 100-Degree Fahrenheit.

**Agitation:** Vertical bottom sweep type agitation, with a propeller type agitator blade at 50% elevation of vertical agitator shaft or side propeller near manhole.

**Agitator Motor:** 460 volts, 60 hertz, 3 phase, 7.5HP, 21 rpm. Unless otherwise noted.

**Thermometer Wells:** Two (2) projectile wells for recording and dial thermometers.

**Lifting Lugs:** Two (2) stainless steel, permanently mounted.

# Silo Features





## Contact us:

**Email:** [info@ancoequipment.com](mailto:info@ancoequipment.com)

**Phone:** (920) 569-3530

**Mailing Address:**

1070 East Glenbrook Drive, Suite #2

Pulaski, Wisconsin 54162

[www.ancoequipment.com](http://www.ancoequipment.com)