



## Processors & Mix Tanks

Serving the food, dairy, & beverage industry  
with strong, long-lasting equipment.



# Processors and Mix Tanks

Anco processors are designed to heat and cool a variety of dairy, beverage, food, and many other fluid processing applications. Anco offers Single Shell tanks as an option when heating or cooling is not necessary. Each tank's size, dimensions, cover, bottom design, and agitator are customized to the client's application.



# Standard Features: Jacketed Process Tank

Food Grade Euro-drive Gearbox

Wash-down motor and all Stainless Motor options

Interior wall 11 Gauge 304ss, #4 finish (316 option)

Stainless steel dimple plated jacket

Exterior wall 14 Gauge 304 Stainless Steel, No. 4 finish

2" Polyurethane Insulation

1-4 Heating Zones

17" to 20" Manway or Wing Doors

Tank Vent on Dome Top

Bottom sweep agitation, Side and Bottom Scrape, Full Sweep or no Agitation

Baffle(s)

2 Stainless Steel CIP Spray Balls Standard (customization available)

1.5" FNPT Standard Jacket Ports (customization upon request)

1.5" to 6" Tri Clamp Ferrule options

Thermowell

Adjustable Ball Feet or Heavy- Duty Casters



# Standard Features: Single Wall Mix Tank

Food Grade Euro-Drive Gearbox

Wash-down motor and all Stainless Motor options

Single wall 11 Gauge 304 Stainless Steel with No. 4 finish

17" to 20" Manway or Wing Doors

Tank Vent

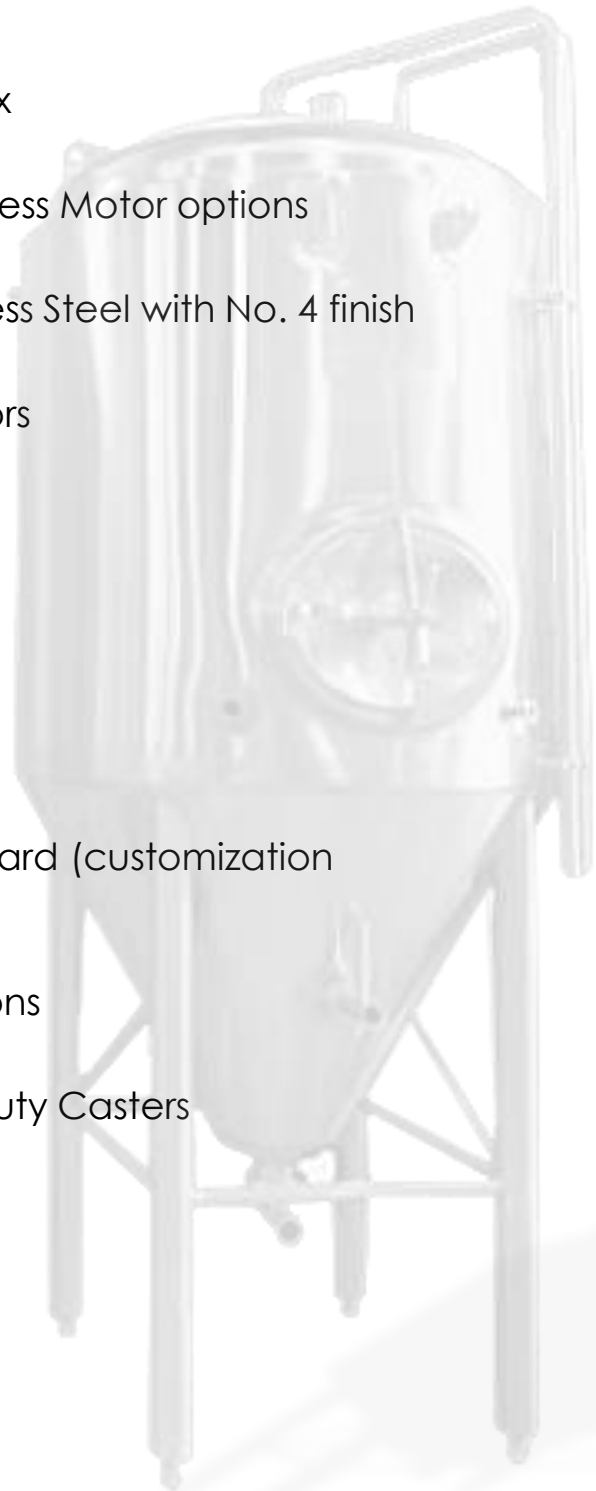
Bottom sweep agitation

Baffle(s)

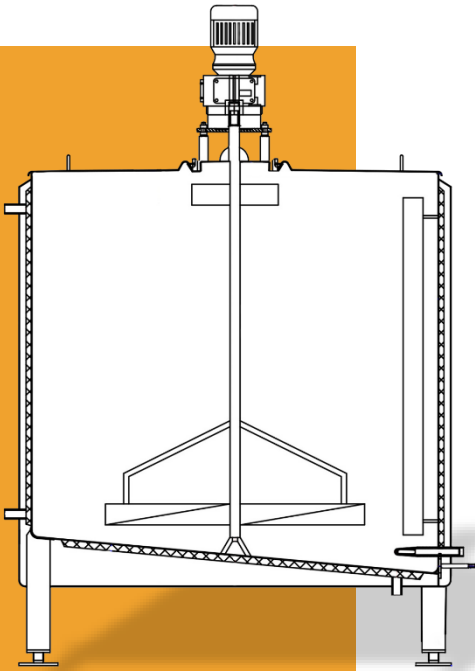
2 Stainless CIP Spray Balls Standard (customization available)

1.5" to 6" Tri Clamp Ferrule options

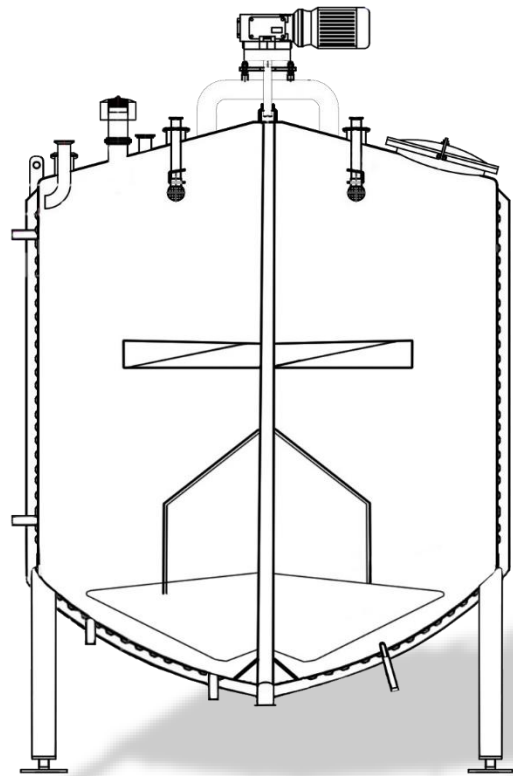
Adjustable Ball Feet or Heavy-Duty Casters



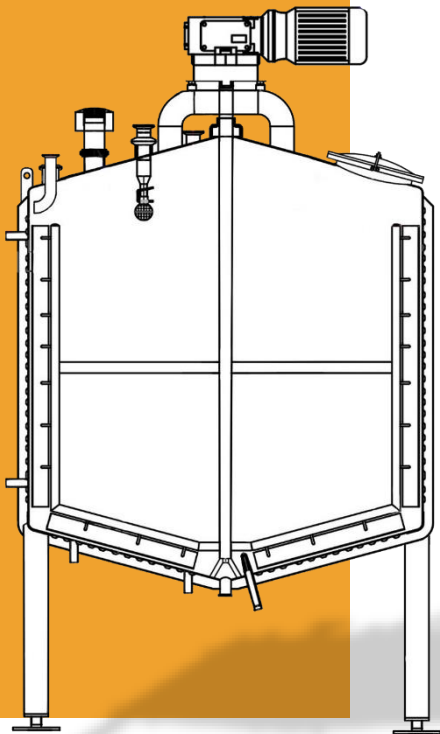
# Tank Bottom Designs



Slope Bottom Design



Dish Bottom Design



Cone Bottom Design

# Processor Sizes & Tank Top Options



Wing Top with Center Bridge



Dome Top with Manway

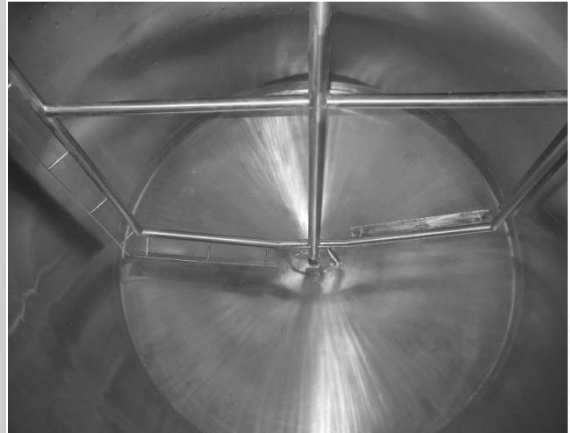
Tank Size	Tank Top Options
50 Gallon (189L) To 150 Gallon (567L)	Wing Doors with Center Bridge Design-Only
200 Gallon (757L) TO 2,000 Gallon	Dome Top with Manway or Wing Doors with Center Bridge Design
Custom Sizes	Call for pricing and options

# Agitation Options

Anco offers a variety of agitator design options for different product applications.



Bottom Sweep Agitation



Full Sweep Agitation



Side Scrape Agitation



## Contact us !

**Email:** [info@ancoequipment.com](mailto:info@ancoequipment.com)

**Phone:** (920) 569-3530

**Mailing Address:** 1070 East Glenbrook Drive  
Pulaski, Wisconsin 54162

**[www.ancoequipment.com](http://www.ancoequipment.com)**